



Frequently asked questions about the Primary Years Programme

What is the Primary Years Programme?

The PYP is a curriculum framework for young learners aged 3–12. Like all International Baccalaureate (IB) programmes, the IB learner profile permeates all facets of school life in the PYP.

The PYP is based on the recognition of a child's natural curiosity, creativity and ability to reflect. It generates a stimulating, challenging learning environment to nurture the whole child and foster a lifelong love of learning for all. The PYP is transdisciplinary, meaning students learn across subject areas while inquiring into big ideas.

Does the PYP have a specific set of standards?

The IB standards offer rigorous guidelines that allow for school and classroom practices to align with the IB educational philosophy and values. The PYP is a framework for schools and their approach to learning and teaching. Students explore significant concepts through units of inquiry. The six transdisciplinary themes that guide units of inquiry in each school year* are:

- Who we are
- Where we are in place and time
- How we express ourselves
- How the world works
- How we organize ourselves
- Sharing the planet

**Students aged 3 to 6 engage in four themes per year.*

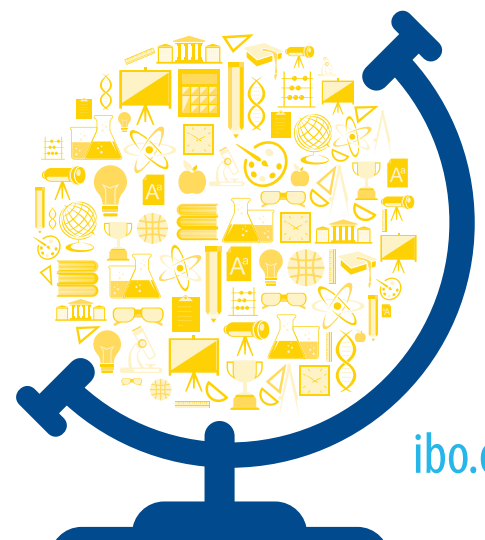
Units of inquiry authentically interweave ideas and skills from the relevant subject areas:

- language
- social studies
- mathematics
- arts
- science
- personal, social and physical education

This approach encourages students to make their own connections between what they know and how it relates to the world around them.

The school outlines its specific knowledge content and academic curriculum within the framework of the PYP including:

- Knowledge content organized by the transdisciplinary themes. Each school decides specific concepts and topics studied through each theme based on their local context.
- Approaches to learning skills aimed to help students become independent, self-motivated learners.
- Action initiated by learners that is authentic, meaningful, mindful, responsible and responsive of their learning and the world they live in.



What are the advantages of an IB education?

- IB students develop a sense of the world around them and their responsibility to it. (See “[What is an IB Education?](#)”)
- IB World Schools (the only schools authorized to offer IB programmes) are subject to a strict accreditation process monitored by the IB, ensuring that schools provide a high-quality education.
- IB approaches to learning and teaching are research-based and draw from the best educational practices from around the world.
- IB teachers are required to participate in many professional development opportunities to continually improve their awareness of current educational practices and new thinking by connecting with the global IB community.
- IB programmes are recognized internationally and ease the educational transitions of mobile students so that their education is not adversely affected if their families relocate.

Does implementing an IB programme mean my child’s school will not teach local or national standards such as the Common Core?

The IB is committed to making sure that students in IB programmes meet and exceed local or national standards. With the implementation of any IB programme, schools are required to examine their curriculum carefully to ensure that there is alignment with local, state or national standards. More information on the IB and the Common Core is available at www.ibo.org.

Are IB programmes considered, “gifted”, programmes?

The PYP is implemented schoolwide and adapted by teachers to meet the learning needs of all students. All PYP teachers are required to participate in collaborative planning and reflection to meet those needs, and to foster a holistic approach to education. A growing body of evidence suggests a positive relationship between teacher collaboration and student achievement.

Have studies been done on the impact of the PYP?

The IB places great value on external validation of its programmes, curriculums and professional development. A recent Global International Schools’ Assessment study found that PYP students outperformed non-IB students in mathematics, reading and writing. Additional studies on programme impact, quality assurance, programme development and assessment research are available at www.ibo.org/research.

When do students start and finish the PYP? When do they transition to the MYP?

The PYP is designed for students aged 3–12 (preschool and primary grades). The MYP spans students aged 11–16, and the Diploma Programme (DP) and Career-related Programme (CP) is for the last two years of high school, students aged 16–19.

Do IB teachers receive special training?

All PYP teachers receive professional development in IB’s approaches to teaching and approaches to learning from certified IB workshop leaders. This is a requirement for IB World Schools implementing the PYP.

What is my role in the PYP? How can I learn more about the IB and PYP?

Parents and caregivers are important members of the PYP learning community. All members of the learning community from the youngest learners to school leaders to parents, educators and beyond, have a responsibility to be guided by the IB and the learner profile attributes. To learn more:

- Visit the IB website at www.ibo.org
- Attend school meetings and events
- Speak with your school’s PYP coordinator
- Speak with your child’s PYP classroom teacher
- Speak with your child
- Explore the [PYP Playlist - International Baccalaureate®](#)