

More about the IB Career-related Programme



Meet CP Alumni, Alexis Thompson

Alexis completed the CP at Hardway High School, Georgia, US. She studied early childhood education at Albany State University and now works as Executive Assistant to the Mayor of Columbus, Georgia.



Why did you decide to pursue the IB Career-related programme?

I learned of the IB Career-related Programme (CP) through the IB Diploma

Programme (DP). I originally was a DP candidate until my senior year at Hardaway High School. Ms. Hampel, then IB coordinator, and Ms. Jackson, then business teacher, thought I and about five other girls would be great candidates for the CP.

At this time, the CP was a pilot programme for Hardaway High School and we were the first candidates and graduates. Both programmes, Diploma and Career-related, offered a unique education and allowed me to think independently, become culturally aware, and drive my own learning.

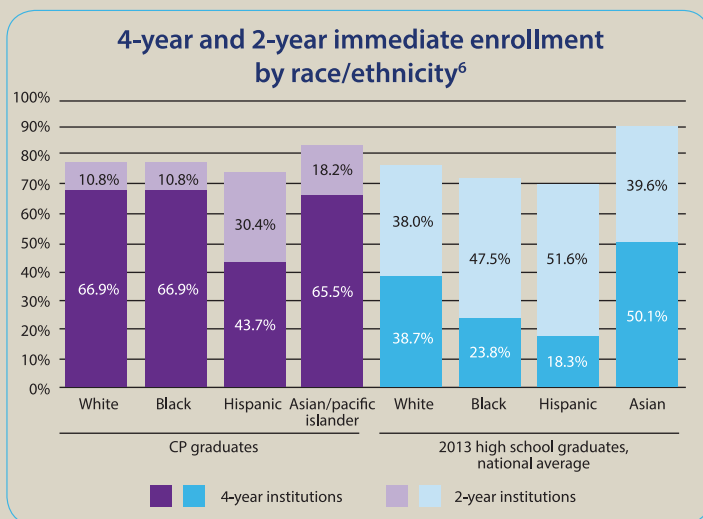
The CP: Empowering innovative Career and Technical Education

The CP helps schools to:

- *Bridge* equity gaps by providing proven world class educational opportunities for all
- *Align* the skills development, approaches to learning, and approaches to teaching across CTE pathways and the comprehensive coursework
- *Incorporate* real-world experiential learning with the project-based approaches of IB course work
- *Elevate* the school profile by bringing the high-quality reputation of IB education together with innovative CTE and entrepreneurial lifelong learning
- *Nurture* international mindedness for all students while providing the opportunity for them to choose areas of interest and excel in high school graduation pathways.
- *Ensure* that students are equally prepared for further study or careers by boosting their employability, personal, professional, academic, and technical skills.

CP Impact Research

Immediate enrollment for four-year over two-year universities were all higher for CP graduates than for all secondary students nationally. These differences were especially pronounced for black and hispanic students. Find the full report at ibo.org/research



Figures for the national cohort are taken from US Department of Education, Digest of Education Statistics 2015, table 302.43. Immediate enrollment includes only individuals who enroll in higher education by October of the year they complete high school.

The IB Learner Profile



What is an IB education?

The IB continuum of international education, for students aged 3 to 19, is unique because of its academic and personal rigour. IB programmes challenge students to excel not only in their studies but also in their personal growth. The IB aims to inspire a quest for learning throughout life that is marked by enthusiasm and empathy.

The IB aspires to help schools develop well-rounded students, who respond to challenges with optimism and an open mind, are confident in their own identities, make ethical decisions, join with others in celebrating their common humanity, and are prepared to apply what they learn in real-world, complex and unpredictable situations.



TECHNICAL SKILLS

such as numeracy skills and analytical writing.



ACADEMIC SKILLS

needed to pursue a specific career pathway upon completion of education.



EMPLOYABILITY SKILLS

such as time management, problem solving, self-discipline, and perseverance.