



International Baccalaureate®
Baccalauréat International
Bachillerato Internacional

The IB Middle Years Programme Statistical Bulletin

June 2012
Moderation session

Middle Years Programme Statistical Bulletin, June 2012 moderation session

Published in November 2012

International Baccalaureate
Peterson House, Malthouse Avenue, Cardiff Gate
Cardiff, Wales CF23 8GL
United Kingdom
Phone: + 44 29 2954 7777
Fax: + 44 29 2054 7778
Website: www.ibo.org

© International Baccalaureate Organization 2012

Statistical queries should be directed to the
Management Information Associate Manager:

Phone: +65 6579 5168
Fax : +65 6776 4369
E-mail: statistics@ibo.org

Contents

| Tables and graphs | Page |
|---|-------------|
| Index: key to abbreviations | 3 |
| Part A: general school statistics | |
| 1 Number of schools following the Middle Years Programme 2008–2012 | 4 |
| 2 Number and percentage of schools following the Middle Years Programme by working language 2008–2012 | 5 |
| 3 Number and percentage of schools following the Middle Years Programme by IB region 2008–2012 | 6 |
| Part B: moderation registration statistics | |
| 4 Number of schools registering candidates for moderation June 2008–June 2012 | 7 |
| 5 Number of schools registering candidates for moderation by working language June 2008–June 2012 | 8 |
| 6 Number and percentage of schools registering candidates for moderation by IB region June 2008–June 2012 | 9 |
| 7 Number of candidates registered for moderation by category June 2008–June 2012 | 10 |
| 8 Number of candidates registered for moderation by gender June 2008–June 2012 | 11 |
| 9 Number of candidates registered for moderation by IB region June 2008–June 2012 | 12 |
| 10 Number of candidates registered by gender and IB region June 2012 | 13 |
| 11 Summary of Middle Years Programme moderation: schools with moderated candidates June 1994–June 2012 | 14 |
| 12 Nationalities of candidates registered for moderation June 2012 | 15 |
| 13 Number of countries represented by moderation session June 2008–June 2012 | 17 |
| 14 Number of candidates registered for moderation by country June 2012 | 18 |
| 15 Number and percentage of candidates registered for moderation per subject June 2008–June 2012 | 19 |
| Part C: results statistics | |
| 16 Analysis of examination results by subject June 2012 | 23 |
| 17 Subject mean grades June 2008–June 2012 | 26 |
| 18 Overall mean grade June 2008–June 2012 | 29 |
| 19 Number of MYP certificates awarded June 2008–June 2012 | 29 |

Index: key to abbreviations

IB regions

Schools that are authorized to offer the IB Diploma Programme are grouped by geographical region. The abbreviations used in the tables are the codes describing the following geographical regions:

| | |
|-------|---|
| IBAEM | IB Africa, Europe and the Middle East |
| IBAP | IB Asia-Pacific |
| IBA | IB Latin America, North America and the Caribbean |

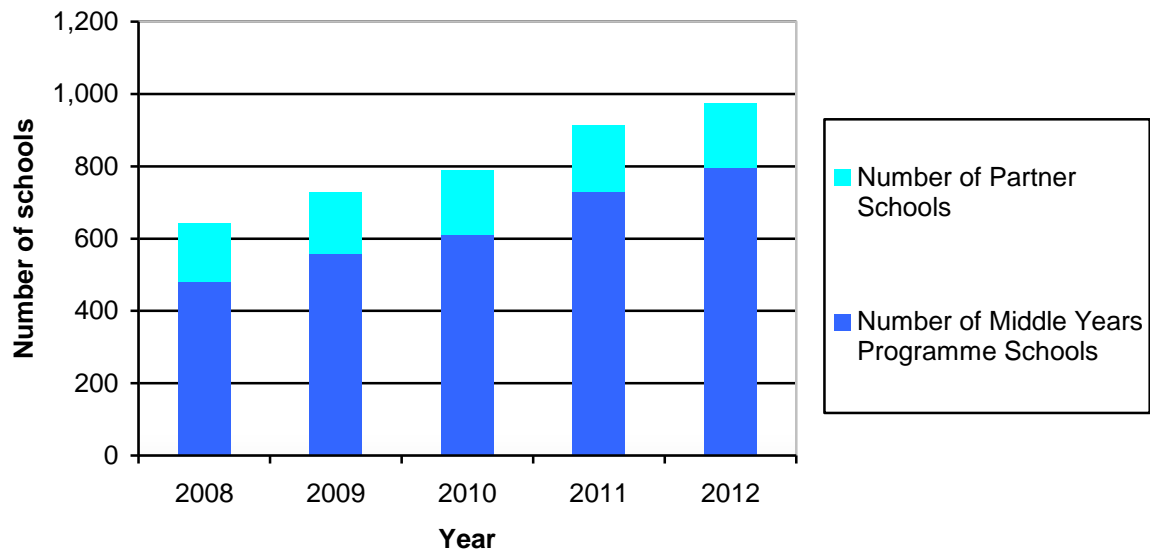
PART A: general school statistics

1 Number of schools following the Middle Years Programme 2008–2012

| Number of schools following the Middle Years Programme* | 2008 | 2009 | 2010 | 2011 | 2012 |
|---|------------|------------|------------|------------|------------|
| MYP | 480 | 560 | 611 | 729 | 794 |
| PARTNER | 163 | 169 | 178 | 185 | 179 |
| TOTAL | 643 | 729 | 789 | 914 | 973 |

*as of 30 June each year

Graph 1.1 Number of schools following the Middle Years Programme 2008–2012

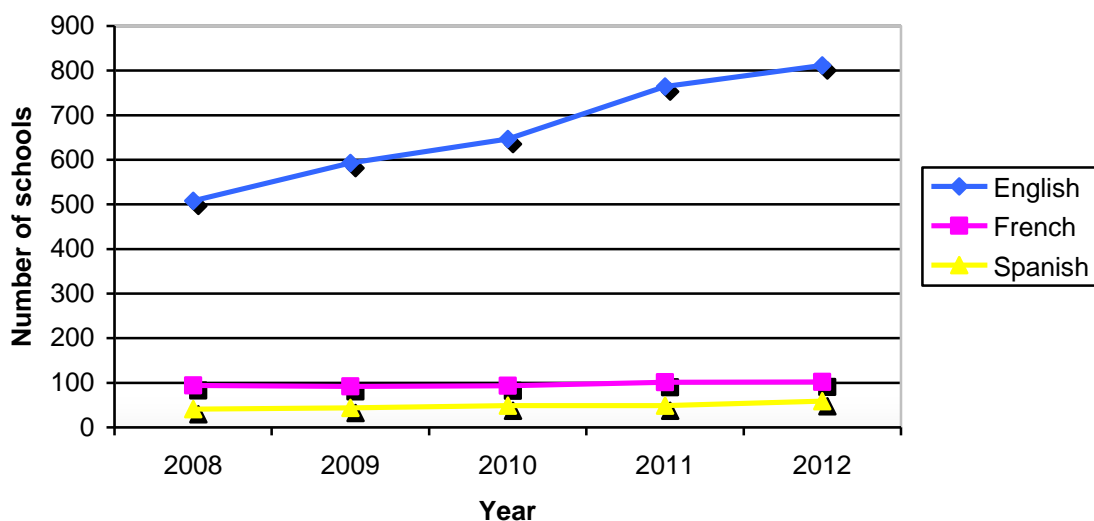


2 Number and percentage of schools following the Middle Years Programme by working language 2008–2012

| Number of schools following the Middle Years Programme by working language* | 2008 | 2009 | 2010 | 2011 | 2012 |
|---|------------|------------|------------|------------|------------|
| English | 508 | 593 | 647 | 764 | 812 |
| French | 94 | 92 | 93 | 101 | 102 |
| Spanish | 41 | 44 | 49 | 49 | 59 |
| Total | 643 | 729 | 789 | 914 | 973 |

*as of 30 June each year

Graph 2.1 Number of schools following the Middle Years Programme by working language 2008–2012



| Percentage of schools following the Middle Years Programme by working language* | 2008 | 2009 | 2010 | 2011 | 2012 |
|---|--------|--------|--------|--------|--------|
| English | 79.00% | 81.34% | 82.00% | 83.59% | 83.45% |
| French | 14.62% | 12.62% | 11.79% | 11.05% | 10.48% |
| Spanish | 6.38% | 6.04% | 6.21% | 5.36% | 6.06% |

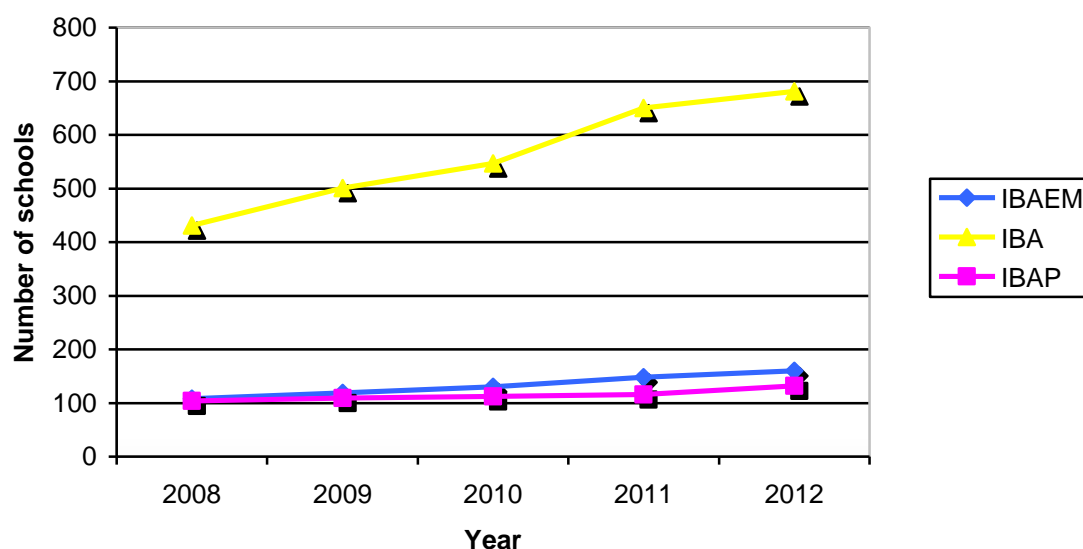
*as of 30 June each year

3 Number and percentage of schools following the Middle Years Programme by IB region 2008–2012

| Number of schools following the Middle Years Programme by IB region* | 2008 | 2009 | 2010 | 2011 | 2012 |
|--|------------|------------|------------|------------|------------|
| IBAEM | 108 | 119 | 130 | 148 | 160 |
| IBAP | 104 | 109 | 112 | 116 | 132 |
| IBA | 431 | 501 | 547 | 650 | 681 |
| Total | 643 | 729 | 789 | 914 | 973 |

*as of 30 June each year

Graph 3.1 Number of schools following the Middle Years Programme by IB region 2008–2012



| Percentage of schools following the Middle Years Programme by IB region* | 2008 | 2009 | 2010 | 2011 | 2012 |
|--|--------|--------|--------|--------|--------|
| IBAEM | 16.80% | 16.32% | 16.48% | 16.19% | 16.44% |
| IBAP | 16.17% | 14.95% | 14.20% | 12.69% | 13.57% |
| IBA | 67.03% | 68.73% | 69.33% | 71.12% | 69.99% |

*as of 30 June each year

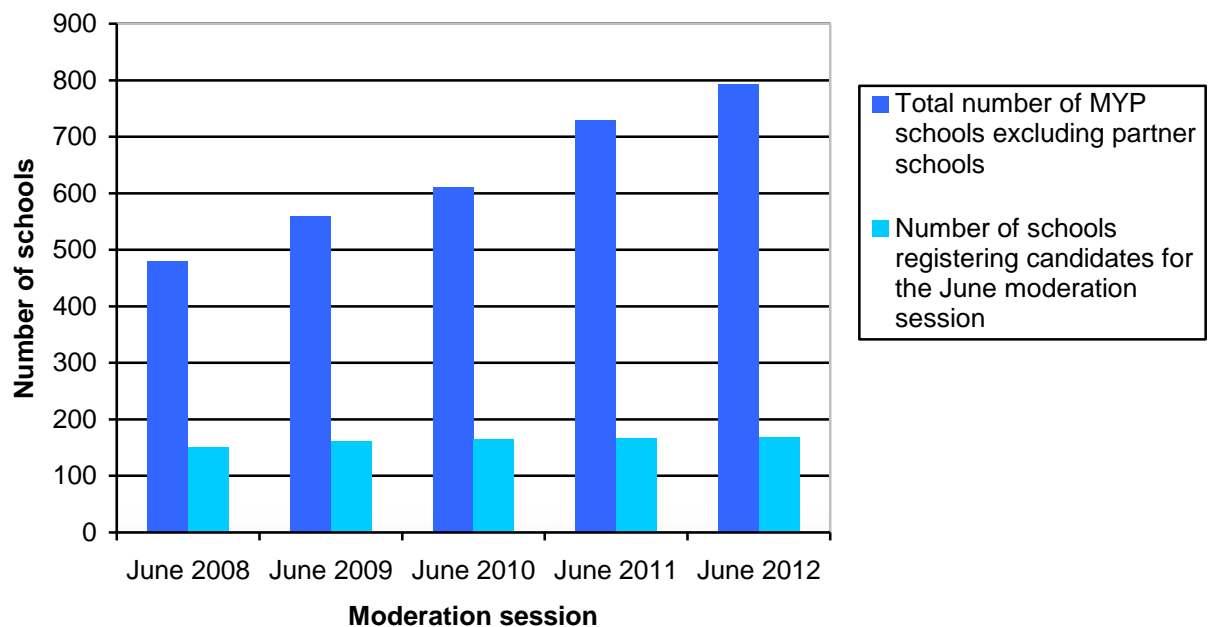
PART B: registration statistics

4 Number of schools registering candidates for moderation June 2008–June 2012

| Number of schools registering candidates | June 2008 | June 2009 | June 2010 | June 2011 | June 2012 |
|--|-----------|-----------|-----------|-----------|-----------|
| | 151 | 161 | 166 | 167 | 169 |
| Percentage of total number of schools* | 31.46% | 28.75% | 27.17% | 22.91% | 21.28% |

*MYP schools excluding partner schools

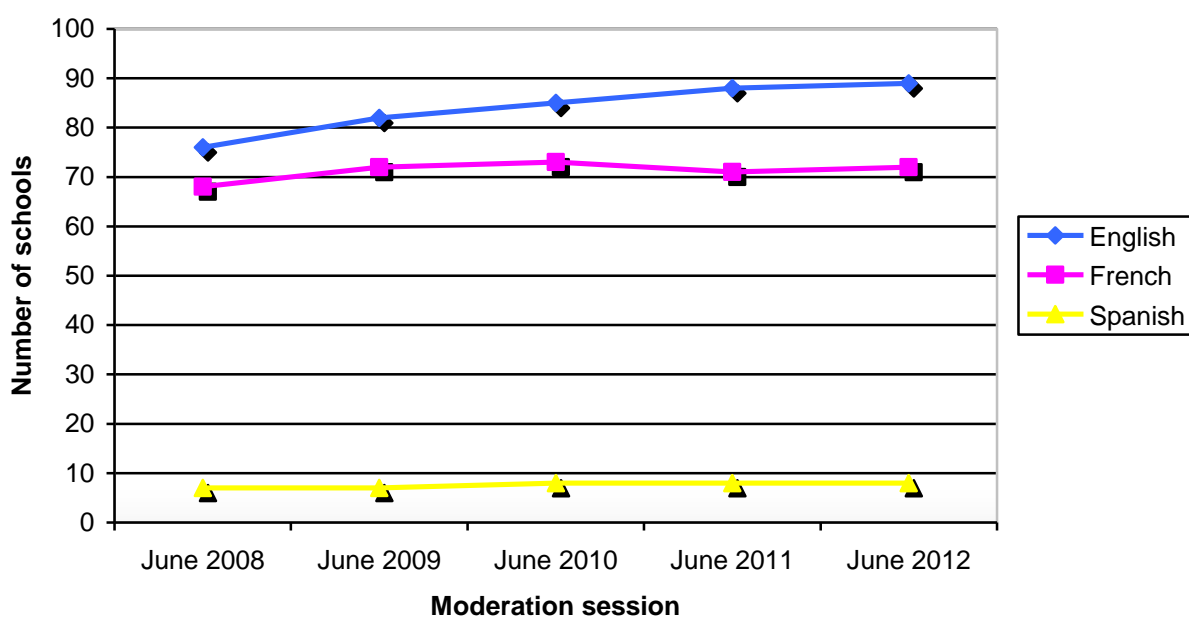
Graph 4.1 Number of schools registering candidates for moderation June 2008–June 2012



5 Number of schools registering candidates for moderation by working language June 2008–June 2012

| Number of schools registering candidates by working language | June 2008 | June 2009 | June 2010 | June 2011 | June 2012 |
|--|------------|------------|------------|------------|------------|
| English | 76 | 82 | 85 | 88 | 89 |
| French | 68 | 72 | 73 | 71 | 72 |
| Spanish | 7 | 7 | 8 | 8 | 8 |
| Total | 151 | 161 | 166 | 167 | 169 |

Graph 5.1 Number of schools registering candidates by working language June 2008–June 2012

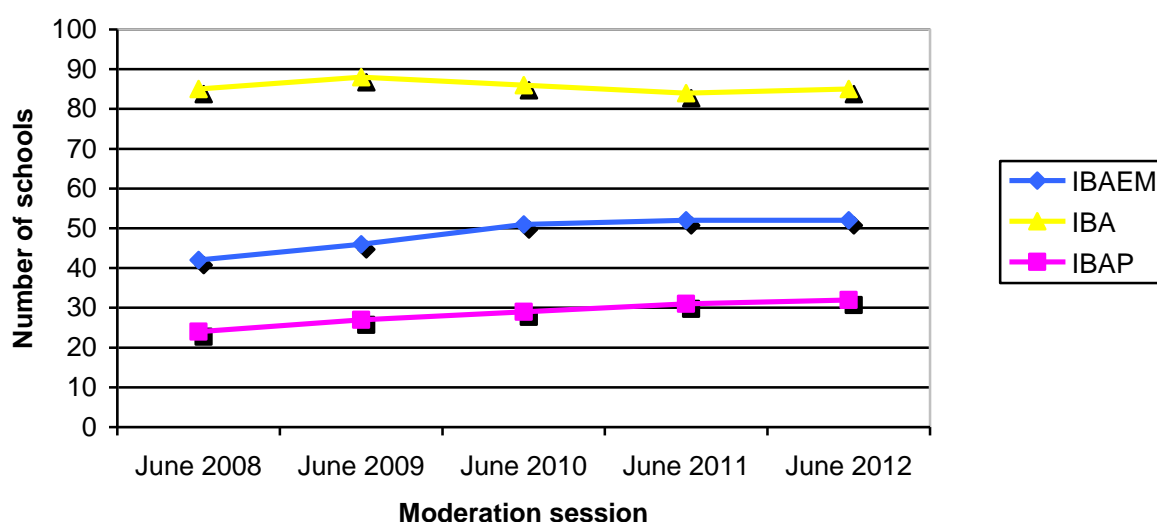


| Percentage of schools registering candidates by working language | June 2008 | June 2009 | June 2010 | June 2011 | June 2012 |
|--|-----------|-----------|-----------|-----------|-----------|
| English | 50.33% | 50.93% | 51.20% | 52.69% | 52.66% |
| French | 45.03% | 44.72% | 43.98% | 42.51% | 42.60% |
| Spanish | 4.64% | 4.35% | 4.82% | 4.79% | 4.73% |

6 Number and percentage of schools registering candidates for moderation by IB region June 2008–June 2012

| Number of schools registering candidates by IB region | June 2008 | June 2009 | June 2010 | June 2011 | June 2012 |
|---|------------|------------|------------|------------|------------|
| IBAEM | 42 | 46 | 51 | 52 | 52 |
| IBAP | 24 | 27 | 29 | 31 | 32 |
| IBA | 85 | 88 | 86 | 84 | 85 |
| Total | 151 | 161 | 166 | 167 | 169 |

Graph 6.1 Number of schools registering candidates by IB region June 2008–June 2012



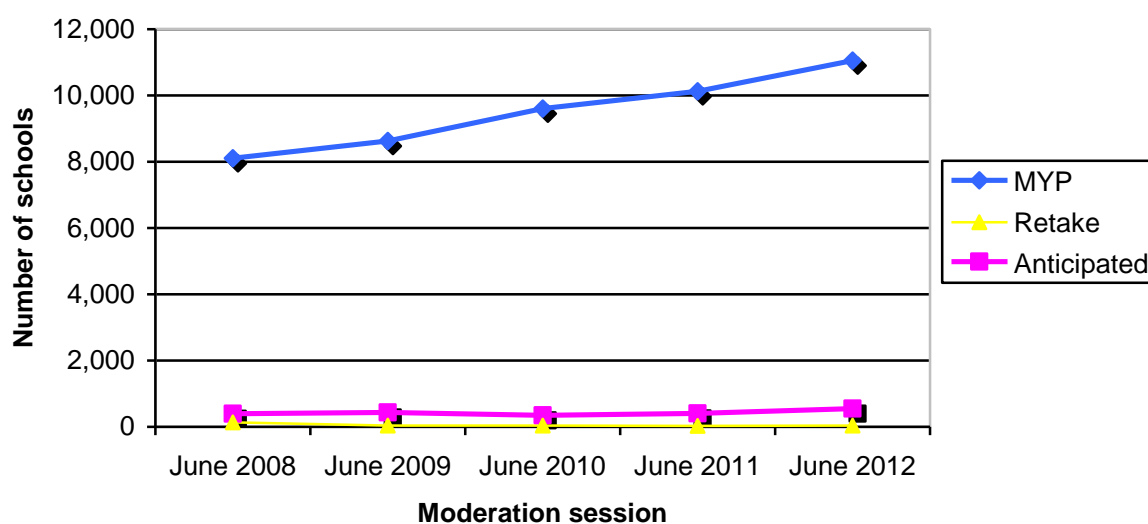
| Percentage of schools registering candidates by IB region | June 2008 | June 2009 | June 2010 | June 2011 | June 2012 |
|---|-----------|-----------|-----------|-----------|-----------|
| IBAEM | 27.81% | 28.57% | 30.72% | 31.14% | 30.77% |
| IBAP | 15.89% | 16.78% | 17.47% | 18.56% | 18.93% |
| IBA | 56.29% | 54.65% | 51.81% | 50.30% | 50.30% |

7 Number of candidates registered for moderation by category June 2008–June 2012

| Number of candidates registered by category | June 2008 | June 2009 | June 2010 | June 2011 | June 2012 |
|---|--------------|--------------|--------------|---------------|---------------|
| MYP | 8,110 | 8,629 | 9,601 | 10,127 | 11,050 |
| Anticipated | 395 | 435 | 345 | 405 | 547 |
| Retake | 140 | 38 | 39 | 25 | 35 |
| Total | 8,645 | 9,102 | 9,985 | 10,557 | 11,788 |

Please Note: Anticipated category was introduced in 2005 and retake category in 2007

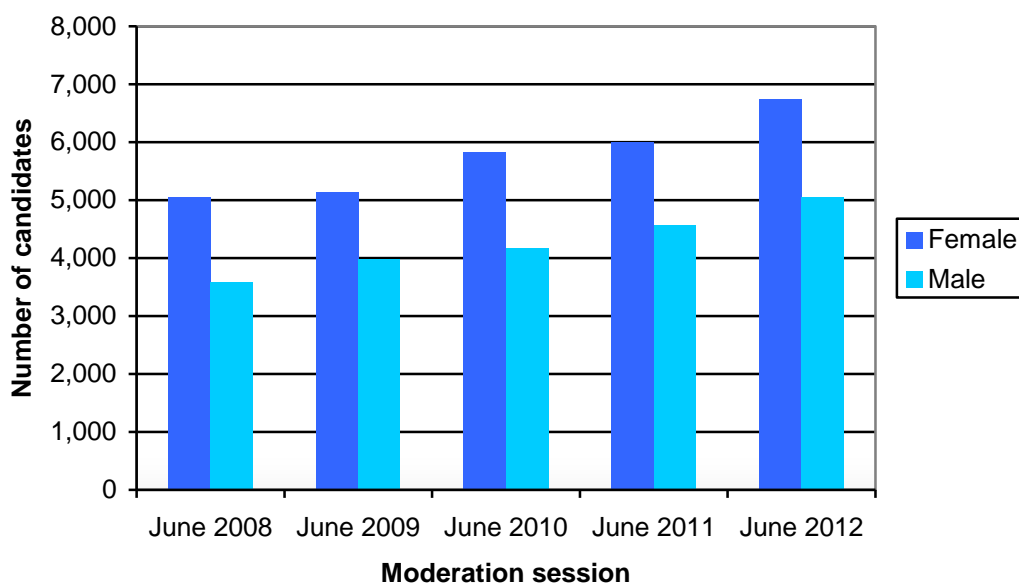
Graph 7.1 Number of candidates registered June 2008–June 2012



8 Number of candidates registered for moderation by gender June 2008–June 2012

| Number of candidates registered by gender | June 2008 | June 2009 | June 2010 | June 2011 | June 2012 |
|---|--------------|--------------|--------------|---------------|---------------|
| Female | 5,058 | 5,129 | 5,817 | 5,996 | 6,745 |
| Male | 3,587 | 3,973 | 4,168 | 4,561 | 5,043 |
| Total | 8,645 | 9,102 | 9,985 | 10,557 | 11,788 |

Graph 8.1 Number of candidates registered by gender June 2008–June 2012

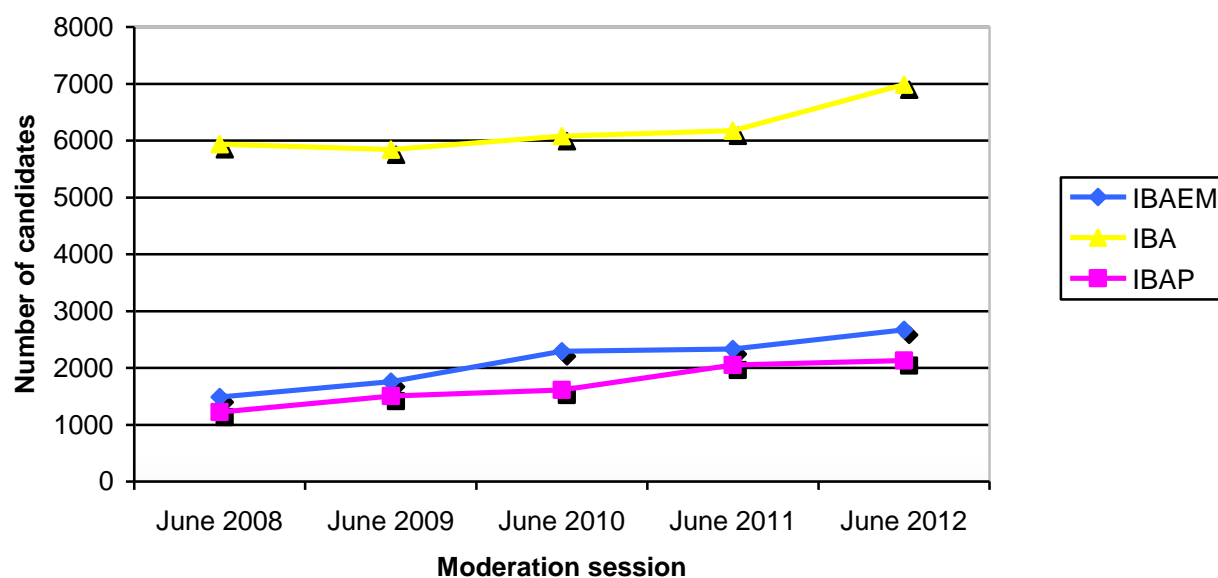


| Percentage of candidates registered by gender | June 2008 | June 2009 | June 2010 | June 2011 | June 2012 |
|---|-----------|-----------|-----------|-----------|-----------|
| Female | 58.51% | 56.35% | 56.80% | 56.80% | 57.22% |
| Male | 41.49% | 43.65% | 43.20% | 43.20% | 42.78% |

9 Number of candidates registered for moderation by IB region June 2008–June 2012

| Number of candidates registered by IB region | June 2008 | June 2009 | June 2010 | June 2011 | June 2012 |
|--|--------------|--------------|--------------|---------------|---------------|
| IBAEM | 1,485 | 1,756 | 2,295 | 2,333 | 2,669 |
| IBAP | 1,220 | 1,504 | 1,612 | 2,049 | 2,132 |
| IBA | 5,940 | 5,842 | 6,078 | 6,175 | 6,987 |
| Total | 8,645 | 9,102 | 9,985 | 10,557 | 11,788 |

Graph 9.1 Number of candidates registered by IB region June 2008–June 2012

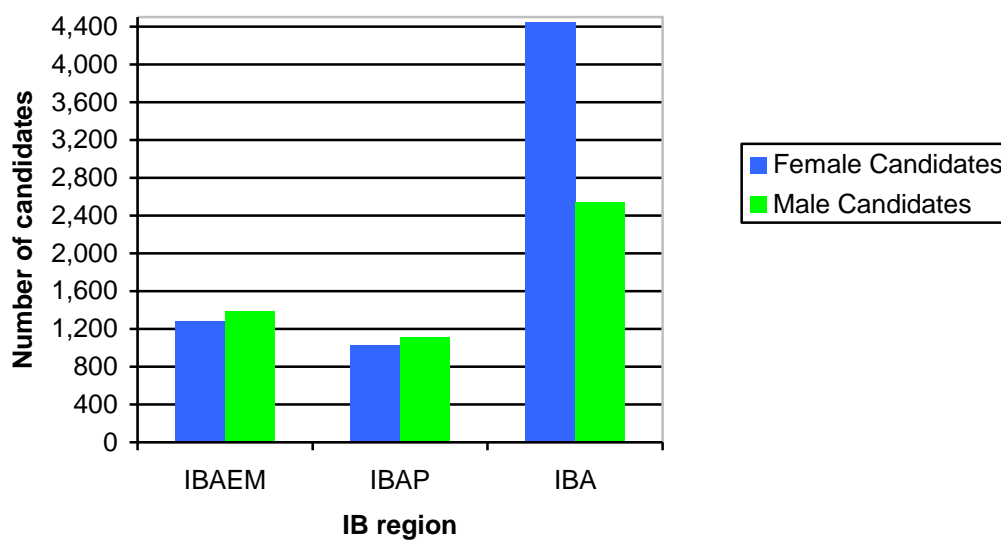


| Percentage of candidates registered by IB region | June 2008 | June 2009 | June 2010 | June 2011 | June 2012 |
|--|-----------|-----------|-----------|-----------|-----------|
| IBAEM | 17.18% | 19.29% | 22.98% | 22.10% | 22.64% |
| IBAP | 14.11% | 16.52% | 16.14% | 19.41% | 18.09% |
| IBA | 68.71% | 64.18% | 60.87% | 58.49% | 59.27% |

10 Number of candidates registered by gender and IB region June 2012

| IB region | Number of candidates registered | | Total number of candidates registered |
|--------------|---------------------------------|---------------------------|---------------------------------------|
| | Number of female candidates | Number of male candidates | |
| IBAEM | 1,281 | 1,388 | 2,669 |
| IBAP | 1,022 | 1,110 | 2,132 |
| IBA | 4,442 | 2,545 | 6,987 |
| TOTAL | 6,745 | 5,043 | 11,788 |

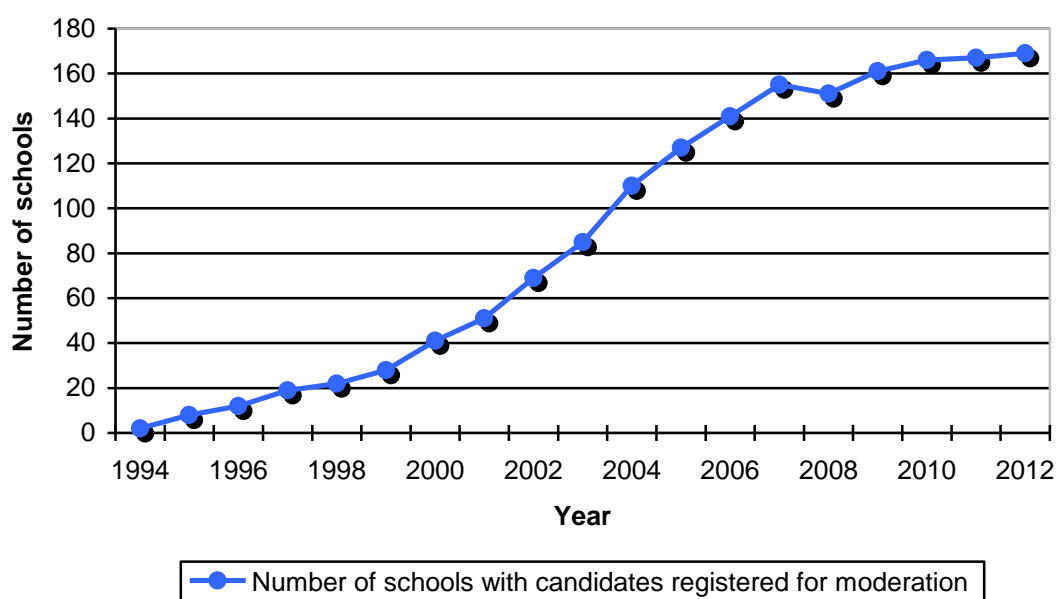
Graph 10.1 Number of candidates registered by gender and IB region June 2012



11 Summary of Middle Years Programme moderation: schools with moderated candidates June 1994–June 2012

| Year | Number of schools moderated | Percentage increase | Number of candidates moderated | Percentage increase | Average number of moderated candidates per school |
|------|-----------------------------|---------------------|--------------------------------|---------------------|---|
| 1994 | 2 | - | 137 | - | 68.50 |
| 1995 | 8 | 300% | 1,319 | 862.77% | 164.88 |
| 1996 | 12 | 50% | 845 | -35.94% | 70.42 |
| 1997 | 19 | 58.33% | 1,265 | 49.70% | 66.58 |
| 1998 | 22 | 15.79% | 1,269 | 0.32% | 57.68 |
| 1999 | 28 | 27.27% | 1,474 | 16.15% | 52.64 |
| 2000 | 41 | 46.43% | 2,232 | 51.42% | 54.44 |
| 2001 | 51 | 24.39% | 2,516 | 12.72% | 49.33 |
| 2002 | 69 | 35.29% | 3,047 | 21.10% | 44.16 |
| 2003 | 85 | 23.19% | 3,769 | 23.70% | 44.34 |
| 2004 | 110 | 29.41% | 4,731 | 25.52% | 43.01 |
| 2005 | 127 | 15.45% | 5,598 | 18.33% | 44.08 |
| 2006 | 141 | 11.02% | 7,073 | 26.35% | 50.16 |
| 2007 | 155 | 9.93% | 8,314 | 17.55% | 53.64 |
| 2008 | 151 | -2.58% | 8,645 | 3.98% | 57.25 |
| 2009 | 161 | 6.62% | 9,102 | 5.29% | 56.53 |
| 2010 | 166 | 3.11% | 9,985 | 9.70% | 60.15 |
| 2011 | 167 | 0.60% | 10,557 | 5.73% | 63.22 |
| 2012 | 169 | 1.20% | 11,788 | 11.66% | 69.75 |

Graph 11.1 Summary of Middle Years Programme moderation: schools registering candidates for moderation June 1994–June 2012



12 Nationalities of candidates registered for moderation June 2012

| Country name | Number of candidates | Country name | Number of candidates |
|--------------------------------|----------------------|--|----------------------|
| AFGHANISTAN | 5 | KUWAIT | 3 |
| ALBANIA | 3 | LAO PEOPLE'S DEMOCRATIC REPUBLIC | 1 |
| ALGERIA | 36 | LATVIA | 3 |
| AMERICAN SAMOA | 1 | LEBANON | 6 |
| ANGOLA | 12 | LIBYAN ARAB JAMAHIRIYA | 1 |
| ARGENTINA | 10 | LITHUANIA | 4 |
| AUSTRALIA | 88 | LUXEMBOURG | 2 |
| AUSTRIA | 4 | MACEDONIA, THE FORMER YUGOSLAV REPUBLIC OF | 2 |
| AZERBAIJAN | 9 | MALAYSIA | 68 |
| BAHAMAS | 6 | MALDIVES | 3 |
| BAHRAIN | 1 | MALTA | 1 |
| BANGLADESH | 44 | MAURITIUS | 1 |
| BELARUS | 3 | MEXICO | 156 |
| BELGIUM | 32 | MOLDOVA, REPUBLIC OF | 2 |
| BERMUDA | 13 | MONGOLIA | 2 |
| BOLIVIA | 2 | MOROCCO | 23 |
| BOSNIA AND HERZEGOVINA | 1 | MYANMAR | 5 |
| BRAZIL | 23 | NAMIBIA | 1 |
| BRITISH INDIAN OCEAN TERRITORY | 4 | NEPAL | 2 |
| BRUNEI DARUSSALAM | 3 | NETHERLANDS (5) | 334 |
| BULGARIA | 10 | NEW ZEALAND | 15 |
| CAMBODIA | 11 | NIGERIA | 10 |
| CAMEROON | 1 | NORWAY | 23 |
| CANADA (1) | 5,988 | OMAN | 2 |
| CHILE | 2 | PAKISTAN | 43 |
| CHINA (7) | 273 | PALESTINIAN TERRITORY, OCCUPIED | 3 |
| COLOMBIA | 10 | PERU | 5 |
| CONGO | 1 | PHILIPPINES | 20 |
| COSTA RICA | 2 | POLAND | 60 |
| COTE D'IVOIRE | 1 | PORTUGAL | 28 |
| CROATIA | 3 | QATAR | 107 |
| CYPRUS | 1 | ROMANIA | 33 |
| CZECH REPUBLIC | 1 | RUSSIAN FEDERATION | 55 |
| DENMARK | 36 | RWANDA | 1 |
| DJIBOUTI | 1 | SAUDI ARABIA | 12 |
| ECUADOR | 11 | SENEGAL | 1 |
| EGYPT | 80 | SERBIA | 5 |
| EL SALVADOR | 2 | SINGAPORE | 52 |
| ERITREA | 3 | SLOVAKIA | 5 |
| ESTONIA | 5 | SLOVENIA | 3 |
| ETHIOPIA | 12 | SOMALIA | 10 |
| FINLAND | 18 | SOUTH AFRICA | 43 |
| FRANCE | 67 | SPAIN (3) | 601 |
| GAMBIA | 2 | SRI LANKA | 11 |

| Country name | | Country name | Number of candidates |
|--|-----|------------------------------|----------------------|
| GEORGIA | 3 | SUDAN | 7 |
| GERMANY | 97 | SWEDEN | 55 |
| GHANA | 4 | SWITZERLAND | 31 |
| GREECE | 5 | SYRIAN ARAB REPUBLIC | 5 |
| GUATEMALA | 1 | TAIWAN | 63 |
| GUINEA | 1 | TANZANIA, UNITED REPUBLIC OF | 38 |
| HAITI | 3 | THAILAND | 59 |
| HONDURAS | 1 | TUNISIA | 1 |
| HONG KONG (10) | 162 | TURKEY | 6 |
| HUNGARY | 5 | UGANDA | 5 |
| ICELAND | 3 | UKRAINE | 20 |
| INDIA (8) | 267 | UNITED ARAB EMIRATES | 5 |
| INDONESIA | 114 | UNITED KINGDOM (4) | 363 |
| IRAN, ISLAMIC REPUBLIC OF | 17 | UNITED STATES (2) | 972 |
| IRAQ | 8 | UZBEKISTAN | 2 |
| IRELAND | 14 | VENEZUELA | 10 |
| ISRAEL | 22 | VIETNAM | 44 |
| ITALY | 48 | YEMEN | 3 |
| JAMAICA | 2 | ZIMBABWE | 2 |
| JAPAN | 90 | | |
| JORDAN (9) | 177 | | |
| KAZAKHSTAN | 75 | | |
| KENYA | 46 | | |
| KOREA, DEMOCRATIC PEOPLE'S REPUBLIC OF | 5 | | |
| KOREA, REPUBLIC OF (6) | 318 | OTHER | 0 |

**Top ten countries rankings displayed in brackets*

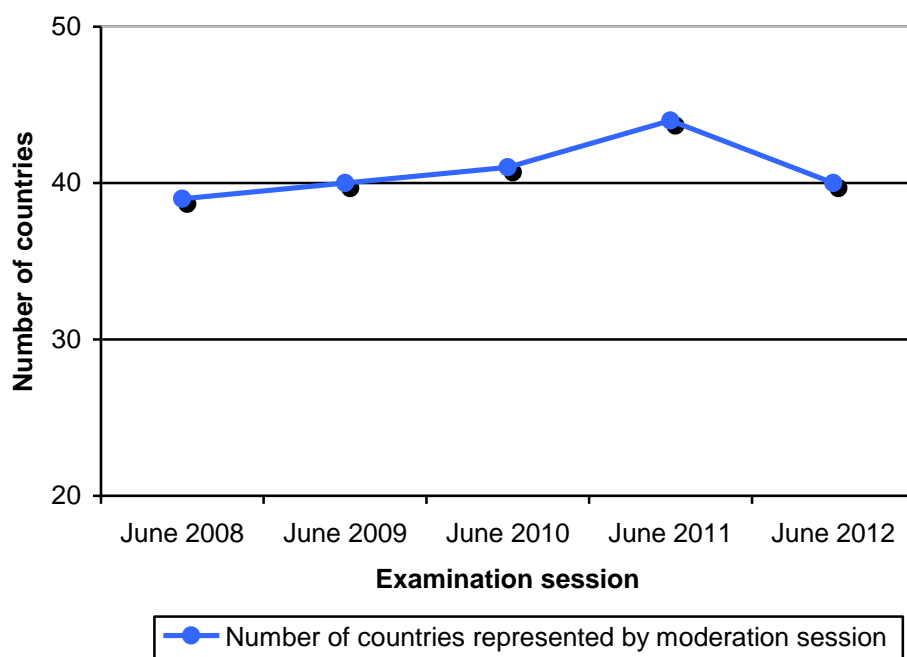
Total number of nationalities: 132

Candidates with dual nationality (second nationality of candidates is not included in the above): 841

13 Number of countries represented by moderation session June 2008–June 2012

| Number of countries represented by examination session | June 2008 | June 2009 | June 2010 | June 2011 | June 2012 |
|--|-----------|-----------|-----------|-----------|-----------|
| | 39 | 40 | 41 | 44 | 40 |

Graph 13.1 Number of countries represented by examination session June 2008–June 2012



14 Number of candidates registered by country June 2012

| Country name | Number of candidates registered | Country name | Number of candidates registered |
|---------------|---------------------------------|--|---------------------------------|
| ANGOLA | 27 | NETHERLANDS (5) | 555 |
| AZERBAIJAN | 19 | NORWAY | 6 |
| BAHAMAS | 13 | PAKISTAN | 20 |
| BANGLADESH | 49 | POLAND | 43 |
| BERMUDA | 16 | PORTUGAL | 39 |
| CAMBODIA | 45 | QATAR | 165 |
| CANADA (1) | 6,043 | RUSSIAN FEDERATION | 28 |
| CHINA (6) | 536 | SINGAPORE (7) | 301 |
| ECUADOR | 10 | SPAIN (3) | 613 |
| EGYPT | 60 | SRI LANKA | 34 |
| GERMANY | 60 | SWEDEN | 34 |
| HONG KONG (4) | 575 | SWITZERLAND (10) | 194 |
| INDIA | 62 | TANZANIA, UNITED REPUBLIC OF | 82 |
| INDONESIA (9) | 204 | THAILAND | 98 |
| JAPAN | 38 | UGANDA | 35 |
| JORDAN | 187 | UKRAINE | 25 |
| KAZAKHSTAN | 88 | UNITED ARAB EMIRATES | 134 |
| KENYA | 45 | UNITED KINGDOM (8) | 230 |
| MALAYSIA | 36 | UNITED STATES (2) | 759 |
| MEXICO | 146 | VIETNAM | 134 |
| | | | |
| | | Total number of candidates registered | 11,788 |

**Top ten countries rankings displayed in brackets*

15 Number of candidates registered for moderation per subject June 2008–June 2012

| Subject | 2008 | 2009 | 2010 | 2011 | 2012 |
|-------------------------|-------|-------|-------|-------|-------|
| GROUP 1 | | | | | |
| AFRIKAANS (APPROVED)* | - | - | - | 1 | - |
| ARABIC A | 112 | 122 | 270 | 231 | 290 |
| BANGLADESHI A | 24 | 25 | 26 | 14 | 20 |
| BANGLADESHI (APPROVED)* | - | - | - | - | 1 |
| BURMESE (APPROVED)* | - | - | - | 1 | - |
| CHINESE A | 125 | 311 | 364 | 553 | 522 |
| CHINESE (APPROVED)* | - | - | 3 | 2 | 7 |
| DANISH A | - | 8 | 9 | 8 | 1 |
| DANISH (APPROVED)* | - | - | - | 1 | - |
| DUTCH A | 234 | 274 | 301 | 280 | 337 |
| DUTCH (APPROVED)* | - | - | 1 | 1 | 3 |
| ENGLISH A | 2,969 | 3,330 | 3,765 | 3,882 | 4,321 |
| FINNISH A | - | 2 | - | 1 | - |
| FINNISH (APPROVED)* | - | - | 2 | - | - |
| FRENCH A | 4,420 | 4,489 | 4,940 | 5,196 | 5,499 |
| FRENCH (APPROVED)* | 1 | 1 | - | 1 | 7 |
| GERMAN A | 50 | 48 | 61 | 71 | 66 |
| GERMAN (APPROVED)* | - | - | 1 | 1 | 4 |
| HEBREW (APPROVED)* | - | - | - | 1 | - |
| HINDI A | 9 | 7 | 4 | 12 | 5 |
| HUNGARIAN (APPROVED)* | - | - | - | - | 1 |
| ICELANDIC A | 1 | 1 | 1 | - | - |
| INDONESIAN (APPROVED)* | - | - | 1 | 1 | 1 |
| INDONESIAN A | - | 3 | - | - | - |
| ITALIAN A | 2 | 4 | 1 | 3 | 8 |
| JAPANESE A | 24 | 43 | 31 | 40 | 40 |
| JAPANESE (APPROVED)* | 1 | - | - | 6 | - |
| KHMER (APPROVED)* | 1 | 1 | - | - | 1 |
| KOREAN A | 113 | 158 | 160 | 136 | 149 |
| KOREAN (APPROVED)* | 3 | - | 1 | - | - |
| LAOTIAN (APPROVED)* | - | - | 1 | - | 1 |
| MALAY (APPROVED)* | - | - | - | - | 1 |
| NORWEGIAN A | - | - | 1 | 11 | 5 |
| NORWEGIAN (APPROVED)* | - | - | - | 1 | - |
| POLISH A | 35 | 32 | 36 | 38 | 43 |
| POLISH (APPROVED)* | - | - | - | 1 | - |
| PORTUGUESE (APPROVED)* | - | - | 2 | 1 | - |
| PORTUGUESE A | 41 | 33 | 46 | 49 | 30 |
| RUSSIAN A | 145 | 160 | 190 | 130 | 117 |
| RUSSIAN (APPROVED)* | - | - | - | - | 1 |
| SPANISH A | 491 | 499 | 569 | 449 | 621 |
| SPANISH (APPROVED)* | - | - | - | 2 | 1 |
| SWAHILI A | - | - | - | 14 | 25 |

| | | | | | |
|------------------------|--------------|--------------|---------------|---------------|---------------|
| SWEDISH A | 1 | 33 | 38 | 2 | 2 |
| SWEDISH (APPROVED)* | - | - | 5 | 2 | 1 |
| TAGALOG (APPROVED)* | - | - | - | - | 2 |
| THAI A | 35 | 35 | 37 | 39 | 41 |
| THAI (APPROVED)* | - | - | 1 | 1 | - |
| TURKISH A | - | - | - | 1 | - |
| TURKISH (APPROVED)* | - | - | 1 | - | 1 |
| VIETNAMESE (APPROVED)* | - | - | 2 | 2 | 1 |
| VIETNAMESE A | 24 | 23 | 33 | 31 | 38 |
| GROUP 1 TOTAL | 8,861 | 9,642 | 10,904 | 11,217 | 12,214 |

* externally taught and approved by the IB

| Subject | 2008 | 2009 | 2010 | 2011 | 2012 |
|-----------------------|-------|-------|-------|-------|-------|
| GROUP 2 | | | | | |
| ADVANCED ARABIC B | - | - | 11 | 24 | 19 |
| ADVANCED DUTCH B | 21 | 27 | 36 | 22 | 38 |
| ADVANCED ENGLISH B | 2,678 | 2,712 | 3,053 | 3,278 | 3,503 |
| ADVANCED FRENCH B | 448 | 420 | 433 | 513 | 581 |
| ADVANCED GERMAN B | 13 | 20 | 35 | 26 | 27 |
| ADVANCED INDONESIAN B | - | 2 | 2 | 11 | 6 |
| ADVANCED JAPANESE B | 8 | 8 | 9 | 16 | 19 |
| ADVANCED KHMER B | 2 | 4 | - | 3 | 2 |
| ADVANCED MALAY B | - | - | - | 7 | 5 |
| ADVANCED MANDARIN B | 85 | 84 | 102 | 126 | 143 |
| ADVANCED PORTUGUESE B | 6 | 9 | 20 | 18 | 16 |
| ADVANCED SPANISH B | 23 | 33 | 47 | 15 | 35 |
| ADVANCED SWAHILI B | - | - | 1 | 6 | - |
| ADVANCED THAI B | - | 4 | 7 | - | - |
| ARABIC B | 20 | 23 | 59 | 49 | 47 |
| ARABIC B FOUNDATION | - | 10 | 12 | 12 | 11 |
| DANISH B | - | 8 | 4 | 6 | - |
| DUTCH B | 97 | 78 | 101 | 101 | 125 |
| DUTCH B FOUNDATION | 30 | 44 | 36 | 54 | 50 |
| ENGLISH B | 2,467 | 2,556 | 2,784 | 2,864 | 3,104 |
| ENGLISH B FOUNDATION | - | 45 | 141 | 40 | 26 |
| FRENCH B | 857 | 852 | 859 | 866 | 884 |
| FRENCH B FOUNDATION | 159 | 158 | 243 | 228 | 179 |
| GERMAN B | 152 | 171 | 162 | 145 | 143 |
| GERMAN B FOUNDATION | 51 | 67 | 80 | 72 | 77 |
| HINDI B | 11 | 7 | 25 | 39 | 26 |
| INDON. B FOUNDATION | - | 4 | 1 | 1 | 2 |
| INDONESIAN B | 11 | 28 | 11 | 80 | 76 |
| JAPANESE B FOUNDATION | 5 | 4 | 9 | 22 | 7 |
| JAPANESE B | 12 | 5 | 9 | 13 | 14 |
| KAZAKH B | 48 | 44 | 60 | 50 | 31 |
| KHMER B | 2 | 1 | 5 | 2 | 1 |
| KHMER B FOUNDATION | 1 | - | 1 | - | 1 |
| MALAY B | - | - | - | 2 | 6 |

| | | | | | |
|-------------------------|--------------|--------------|--------------|--------------|---------------|
| MALAY B FOUNDATION | - | - | - | 4 | 2 |
| MANDARIN B FOUNDATION | 62 | 123 | 125 | 132 | 152 |
| MANDARIN B | 177 | 195 | 182 | 267 | 373 |
| PORTUGUESE B FOUNDATION | 3 | 2 | 4 | 3 | 8 |
| PORTUGUESE B | 9 | 3 | 8 | 12 | 7 |
| RUSSIAN B | 6 | 5 | 11 | 15 | 9 |
| RUSSIAN B FOUNDATION | - | - | - | 3 | 7 |
| SPANISH B | 411 | 388 | 388 | 390 | 568 |
| SPANISH B FOUNDATION | 70 | 120 | 137 | 190 | 143 |
| SWAHILI B | 8 | 21 | 14 | 44 | 17 |
| SWAHILI B FOUNDATION | - | 3 | 7 | 8 | 6 |
| SWEDISH B | - | - | - | 1 | 1 |
| THAI B | 11 | 6 | - | - | - |
| THAI B FOUNDATION | - | 2 | - | - | - |
| TURKISH B | - | 1 | - | - | - |
| URDU B | 18 | 17 | 14 | 7 | 14 |
| VIETNAMESE B | 1 | - | - | - | - |
| GROUP 2 TOTAL | 7,983 | 8,314 | 9,248 | 9,787 | 10,511 |

| Subject | 2008 | 2009 | 2010 | 2011 | 2012 |
|----------------------|--------------|--------------|---------------|---------------|---------------|
| GROUP 3 | | | | | |
| BUSINESS STUDIES | - | 96 | 86 | 181 | 197 |
| ECONOMICS | 144 | 117 | 219 | 366 | 402 |
| GEOGRAPHY | 1,435 | 1,449 | 909 | 859 | 1,210 |
| HISTORY | 5,937 | 5,903 | 3,705 | 3,007 | 3,124 |
| HUMANITIES | 1,452 | 1,801 | 5,399 | 6,413 | 6,744 |
| PHILOSOPHY | - | - | - | - | 22 |
| GROUP 3 TOTAL | 8,968 | 9,366 | 10,318 | 10,826 | 11,699 |

| Subject | 2008 | 2009 | 2010 | 2011 | 2012 |
|----------------------|---------------|---------------|---------------|---------------|---------------|
| GROUP 4 | | | | | |
| BIOLOGY | 2,087 | 1,906 | 1,531 | 1,640 | 2,146 |
| CHEMISTRY | 3,691 | 3,796 | 4,282 | 4,172 | 4,412 |
| PHYSICS | 3,557 | 3,445 | 3,479 | 3,860 | 4,091 |
| SCIENCES | 2,193 | 2,490 | 3,291 | 3,871 | 3,717 |
| GROUP 4 TOTAL | 11,528 | 11,637 | 12,583 | 13,543 | 14,366 |

| Subject | 2008 | 2009 | 2010 | 2011 | 2012 |
|----------------------|--------------|--------------|--------------|---------------|---------------|
| GROUP 5 | | | | | |
| EXTENDED MATHS | 4,786 | 5,058 | 5,380 | 5,552 | 5,977 |
| MATHEMATICS | 3,396 | 3,623 | 4,330 | 4,673 | 5,041 |
| GROUP 5 TOTAL | 8,182 | 8,681 | 9,710 | 10,225 | 11,018 |

| Subject | 2008 | 2009 | 2010 | 2011 | 2012 |
|----------------------|--------------|--------------|---------------|---------------|---------------|
| GROUP 6 | | | | | |
| DANCE | 113 | 63 | 33 | 127 | 84 |
| DRAMA | 1,942 | 1,995 | 2,258 | 2,328 | 2,296 |
| FILM | - | 96 | 49 | 65 | 103 |
| MUSIC | 1,552 | 1,602 | 1,826 | 1,899 | 2,021 |
| PERFORMING ARTS | 15 | - | - | 14 | - |
| VISUAL ARTS | 4,918 | 5,233 | 6,053 | 6,068 | 6,562 |
| GROUP 6 TOTAL | 8,540 | 8,989 | 10,219 | 10,501 | 11,066 |

| Subject | 2008 | 2009 | 2010 | 2011 | 2012 |
|----------------------|--------------|--------------|--------------|---------------|---------------|
| GROUP 7 | | | | | |
| PHYSICAL EDUCATION | 8,109 | 8,574 | 9,419 | 10,097 | 10,740 |
| GROUP 7 TOTAL | 8,109 | 8,574 | 9,419 | 10,097 | 10,740 |

| Subject | 2008 | 2009 | 2010 | 2011 | 2012 |
|----------------------|--------------|--------------|--------------|---------------|---------------|
| GROUP 8 | | | | | |
| COMPUTER TECHNOLOGY | 1,915 | 2,004 | 2,064 | 2,125 | 2,123 |
| DESIGN TECHNOLOGY | 2,951 | 2,702 | 2,599 | 2,786 | 2,483 |
| TECHNOLOGY | 3,528 | 4,192 | 4,951 | 5,399 | 6,188 |
| GROUP 8 TOTAL | 8,394 | 8,898 | 9,614 | 10,310 | 10,794 |

| Subject | 2008 | 2009 | 2010 | 2011 | 2012 |
|----------------------|--------------|--------------|--------------|---------------|---------------|
| GROUP 9 | | | | | |
| PERSONAL PROJECT | 8,028 | 8,548 | 9,394 | 10,004 | 10,581 |
| GROUP 9 TOTAL | 8,028 | 8,548 | 9,394 | 10,004 | 10,581 |

| | | | | | |
|---------------------------|---------------|---------------|---------------|---------------|----------------|
| ALL SUBJECTS TOTAL | 78,593 | 82,649 | 91,409 | 96,510 | 102,989 |
|---------------------------|---------------|---------------|---------------|---------------|----------------|

PART C: results statistics

16 Analysis of results by subject June 2012

| Subject | Level | Number of candidates | Percentage of candidates awarded grades | | | | | | | Mean grade |
|----------------------|-------|----------------------|---|----------|----------|-----------|-----------|-----------|----------|-------------|
| | | | 1 | 2 | 3 | 4 | 5 | 6 | 7 | |
| GROUP 1 | | | | | | | | | | |
| ARABIC A | MY | 288 | 1 | 3 | 8 | 16 | 34 | 28 | 10 | 5.01 |
| BANGLA A | MY | 20 | | 10 | 5 | 25 | 20 | 35 | 5 | 4.80 |
| CHINESE A | MY | 514 | | | 5 | 26 | 34 | 26 | 9 | 5.07 |
| DANISH A | MY | | | | | | | | | |
| DUTCH A | MY | 327 | | 1 | 6 | 40 | 38 | 13 | 3 | 4.66 |
| ENGLISH A | MY | 4,177 | | 1 | 4 | 25 | 37 | 26 | 6 | 5.02 |
| FINNISH A | MY | | | | | | | | | |
| FRENCH A | MY | 5,445 | | | 4 | 22 | 40 | 30 | 5 | 5.10 |
| GERMAN A | MY | 60 | | | 2 | 20 | 42 | 33 | 5 | 5.23 |
| HINDI A | MY | | | | | | | | | |
| ITALIAN A | MY | | | | | | | | | |
| JAPANESE A | MY | 31 | | | | 16 | 16 | 42 | 26 | 5.77 |
| KOREAN A | MY | 142 | | | 1 | 4 | 22 | 52 | 22 | 5.91 |
| NORWEGIAN A | MY | | | | | | | | | |
| POLISH A | MY | 43 | | | | 9 | 72 | 19 | | 5.09 |
| PORTUGUESE A | MY | 29 | | | 3 | 41 | 24 | 31 | | 4.83 |
| RUSSIAN A | MY | 110 | | | 5 | 16 | 42 | 29 | 7 | 5.16 |
| SPANISH A | MY | 608 | 1 | 4 | 6 | 41 | 25 | 17 | 6 | 4.61 |
| SWAHILI A | MY | 24 | | | | 8 | 42 | 42 | 8 | 5.50 |
| SWEDISH A | MY | | | | | | | | | |
| THAI A | MY | 41 | | | | 15 | 39 | 41 | 5 | 5.37 |
| TURKISH A | MY | | | | | | | | | |
| VIETNAMESE A | MY | 38 | | | 8 | 29 | 29 | 11 | 24 | 5.13 |
| GROUP 1 TOTAL | | 11,917 | | 1 | 4 | 24 | 37 | 28 | 6 | 5.05 |

| Subject | Level | Number of candidates | Percentage of candidates awarded grades | | | | | | | Mean grade |
|-----------------------|-------|----------------------|---|---|----|----|----|----|----|------------|
| | | | 1 | 2 | 3 | 4 | 5 | 6 | 7 | |
| GROUP 2 | | | | | | | | | | |
| ADVANCED ARABIC B | MY | 18 | | | | 6 | 56 | 33 | 6 | 5.39 |
| ADVANCED DUTCH B | MY | 31 | | | 3 | 19 | 39 | 26 | 13 | 5.26 |
| ADVANCED ENGLISH B | MY | 3,432 | | | 4 | 19 | 36 | 30 | 11 | 5.22 |
| ADVANCED FRENCH B | MY | 573 | | 1 | 10 | 22 | 34 | 24 | 9 | 4.97 |
| ADVANCED GERMAN B | MY | 27 | | | | 26 | 33 | 33 | 7 | 5.22 |
| ADVANCED INDONESIAN B | MY | | | | | | | | | |
| ADVANCED JAPANESE B | MY | 19 | | | | 5 | | 53 | 42 | 6.32 |
| ADVANCED KHMER B | MY | | | | | | | | | |
| ADVANCED MALAY B | MY | | | | | | | | | |
| ADVANCED MANDARIN B | MY | 135 | | 1 | 4 | 17 | 36 | 28 | 13 | 5.27 |
| ADVANCED PORTUGUESE B | MY | 14 | | | | 29 | 21 | 29 | 21 | 5.43 |

| Subject | Level | Number of candidates | Percentage of candidates awarded grades | | | | | | | Mean grade |
|-------------------------|-------|----------------------|---|----------|----------|-----------|-----------|-----------|-----------|-------------|
| | | | 1 | 2 | 3 | 4 | 5 | 6 | 7 | |
| GROUP 2 | | | | | | | | | | |
| ADVANCED SPANISH B | MY | 30 | | | 3 | 7 | 23 | 37 | 30 | 5.83 |
| ADVANCED SWAHILI B | MY | | | | | | | | | |
| ARABIC B | MY | 46 | | | 4 | 9 | 28 | 35 | 24 | 5.65 |
| ARABIC B FOUNDATION | MY | 11 | | | 9 | 18 | 36 | 18 | 18 | 5.18 |
| DANISH B | MY | | | | | | | | | |
| DUTCH B | MY | 106 | | | 8 | 36 | 39 | 12 | 6 | 4.73 |
| DUTCH B FOUNDATION | MY | 45 | | 9 | 22 | 29 | 27 | 11 | 2 | 4.16 |
| ENGLISH B | MY | 3,057 | | 1 | 6 | 24 | 29 | 27 | 13 | 5.14 |
| ENGLISH B FOUNDATION | MY | 11 | | 9 | 27 | 27 | 18 | 18 | | 4.09 |
| FRENCH B | MY | 837 | 1 | 3 | 13 | 24 | 22 | 23 | 14 | 4.90 |
| FRENCH B FOUNDATION | MY | 158 | | 3 | 13 | 47 | 20 | 13 | 4 | 4.39 |
| GERMAN B | MY | 140 | | | 7 | 26 | 36 | 22 | 9 | 4.99 |
| GERMAN B FOUNDATION | MY | 76 | | | 5 | 24 | 36 | 26 | 9 | 5.11 |
| HINDI B | MY | 26 | | | | 19 | 12 | 35 | 35 | 5.85 |
| INDONESIAN B FOUNDATION | MY | | | | | | | | | |
| INDONESIAN B | MY | 74 | | 4 | 8 | 32 | 35 | 20 | | 4.43 |
| JAPANESE B FOUNDATION | MY | | | | | | | | | |
| JAPANESE B | MY | 14 | | | 14 | | 36 | 36 | 14 | 5.36 |
| KAZAKH B | MY | 31 | | | | 26 | 29 | 23 | 23 | 5.42 |
| KHMER B | MY | | | | | | | | | |
| MALAY B | MY | | | | | | | | | |
| MALAY B FOUNDATION | MY | | | | | | | | | |
| MANDARIN B FOUNDATION | MY | 139 | 1 | 9 | 13 | 20 | 32 | 19 | 6 | 4.50 |
| MANDARIN B | MY | 331 | | 3 | 8 | 24 | 31 | 27 | 7 | 4.92 |
| PORTUGUESE B FOUNDATION | MY | | | | | | | | | |
| PORTUGUESE B | MY | | | | | | | | | |
| RUSSIAN B | MY | | | | | | | | | |
| RUSSIAN B FOUNDATION | MY | | | | | | | | | |
| SPANISH B | MY | 518 | | 3 | 17 | 32 | 22 | 18 | 8 | 4.56 |
| SPANISH B FOUNDATION | MY | 127 | 1 | 2 | 13 | 28 | 27 | 20 | 8 | 4.71 |
| SWAHILI B | MY | 15 | | | | 7 | 53 | 40 | | 5.33 |
| SWAHILI B FOUNDATION | MY | | | | | | | | | |
| SWEDISH B | MY | | | | | | | | | |
| URDU B | MY | 14 | 7 | 7 | 14 | 50 | 21 | | | 3.71 |
| GROUP 2 TOTAL | | 10,121 | | 1 | 7 | 23 | 31 | 26 | 11 | 5.07 |

*Subjects with less than 10 candidates registered have results distribution omitted from the above to prevent possible identification of individual candidate grades

| Subject | Level | Number of candidates | Percentage of candidates awarded grades | | | | | | | Mean grade |
|----------------------|-------|----------------------|---|----------|----------|-----------|-----------|-----------|-----------|-------------|
| | | | 1 | 2 | 3 | 4 | 5 | 6 | 7 | |
| GROUP 3 | | | | | | | | | | |
| BUSINESS STUDIES | MY | 187 | | 1 | 18 | 34 | 21 | 22 | 4 | 4.59 |
| ECONOMICS | MY | 363 | | 2 | 9 | 24 | 36 | 23 | 6 | 4.87 |
| GEOGRAPHY | MY | 1,134 | 1 | 2 | 9 | 26 | 31 | 24 | 7 | 4.81 |
| HISTORY | MY | 3,035 | | 1 | 6 | 17 | 31 | 33 | 12 | 5.25 |
| HUMANITIES | MY | 6,601 | | 1 | 8 | 20 | 31 | 29 | 11 | 5.09 |
| PHILOSOPHY | MY | 20 | | | | | 15 | 30 | 55 | 6.40 |
| GROUP 3 TOTAL | | 11,340 | | 1 | 8 | 20 | 31 | 29 | 10 | 5.09 |

| Subject | Level | Number of candidates | Percentage of candidates awarded grades | | | | | | | Mean grade |
|----------------------|-------|----------------------|---|----------|-----------|-----------|-----------|-----------|----------|-------------|
| | | | 1 | 2 | 3 | 4 | 5 | 6 | 7 | |
| GROUP 4 | | | | | | | | | | |
| BIOLOGY | MY | 2,054 | 1 | 3 | 18 | 36 | 22 | 14 | 6 | 4.43 |
| CHEMISTRY | MY | 4,272 | 1 | 4 | 9 | 38 | 27 | 17 | 5 | 4.57 |
| PHYSICS | MY | 3,965 | | 1 | 10 | 34 | 29 | 19 | 7 | 4.74 |
| SCIENCES | MY | 3,430 | | 1 | 11 | 34 | 27 | 19 | 8 | 4.76 |
| GROUP 4 TOTAL | | 13,721 | | 2 | 11 | 35 | 27 | 17 | 7 | 4.65 |

| Subject | Level | Number of candidates | Percentage of candidates awarded grades | | | | | | | Mean grade |
|----------------------|-------|----------------------|---|----------|----------|-----------|-----------|-----------|----------|-------------|
| | | | 1 | 2 | 3 | 4 | 5 | 6 | 7 | |
| GROUP 5 | | | | | | | | | | |
| EXTENDED MATHEMATICS | MY | 5,690 | | 1 | 7 | 29 | 34 | 23 | 6 | 4.88 |
| MATHEMATICS | MY | 4,842 | 1 | 3 | 12 | 35 | 30 | 16 | 3 | 4.54 |
| GROUP 5 TOTAL | | 10,532 | | 2 | 9 | 32 | 33 | 20 | 5 | 4.72 |

| Subject | Level | Number of candidates | Percentage of candidates awarded grades | | | | | | | Mean grade |
|----------------------|-------|----------------------|---|----------|----------|-----------|-----------|-----------|----------|-------------|
| | | | 1 | 2 | 3 | 4 | 5 | 6 | 7 | |
| GROUP 6 | | | | | | | | | | |
| DANCE | MY | 82 | | | 4 | 11 | 32 | 43 | 11 | 5.46 |
| DRAMA | MY | 2,186 | | 1 | 3 | 19 | 31 | 34 | 13 | 5.33 |
| FILM | MY | 75 | | | 1 | 28 | 28 | 29 | 13 | 5.25 |
| MUSIC | MY | 1,964 | | 1 | 4 | 27 | 33 | 25 | 10 | 5.07 |
| PERFORMING ARTS | MY | | | | | | | | | |
| VISUAL ARTS | MY | 6,436 | | 1 | 6 | 26 | 30 | 29 | 8 | 5.03 |
| GROUP 6 TOTAL | | 10,743 | | 1 | 5 | 25 | 31 | 29 | 9 | 5.10 |

| Subject | Level | Number of candidates | Percentage of candidates awarded grades | | | | | | | Mean grade |
|----------------------|-------|----------------------|---|----------|----------|-----------|-----------|-----------|----------|-------------|
| | | | 1 | 2 | 3 | 4 | 5 | 6 | 7 | |
| GROUP 7 | | | | | | | | | | |
| PHYSICAL EDUCATION | MY | 10,522 | | 1 | 5 | 30 | 36 | 22 | 5 | 4.90 |
| GROUP 7 TOTAL | | 10,522 | | 1 | 5 | 30 | 36 | 22 | 5 | 4.90 |

| Subject | Level | Number of candidates | Percentage of candidates awarded grades | | | | | | | Mean grade |
|---------------------------|-------|----------------------|---|--------------|--------------|---------------|---------------|---------------|--------------|-------------|
| | | | 1 | 2 | 3 | 4 | 5 | 6 | 7 | |
| GROUP 8 | | | | | | | | | | |
| COMPUTER TECHNOLOGY | MY | 1,861 | 2 | 5 | 11 | 29 | 25 | 20 | 9 | 4.65 |
| DESIGN TECHNOLOGY | MY | 2,411 | | 1 | 7 | 18 | 29 | 27 | 17 | 5.25 |
| TECHNOLOGY | MY | 5,989 | | 1 | 5 | 22 | 28 | 27 | 17 | 5.26 |
| GROUP 8 TOTAL | | 10,261 | 1 | 2 | 7 | 22 | 28 | 26 | 15 | 5.14 |
| | | | | | | | | | | |
| Subject | Level | Number of candidates | Percentage of candidates awarded grades | | | | | | | Mean grade |
| | | | 1 | 2 | 3 | 4 | 5 | 6 | 7 | |
| GROUP 9 | | | | | | | | | | |
| PERSONAL PROJECT | MY | 10,247 | 1 | 2 | 8 | 17 | 24 | 27 | 22 | 5.29 |
| GROUP 9 TOTAL | | 10,247 | 1 | 2 | 8 | 17 | 24 | 27 | 22 | 5.29 |
| | | | | | | | | | | |
| ALL SUBJECTS TOTAL | | 99,404 | 293 | 1,342 | 7,192 | 25,479 | 30,757 | 24,577 | 9,764 | 4.99 |

17 Mean grade distribution by subject June 2008 – June 2012

| Subject | 2008 | 2009 | 2010 | 2011 | 2012 |
|----------------------|-------------|-------------|-------------|-------------|-------------|
| GROUP 1 | | | | | |
| ARABIC A | 5.22 | 5.37 | 4.96 | 5.21 | 5.01 |
| BANGLA A | 4.84 | 4.50 | 4.52 | 4.93 | 4.80 |
| CHINESE A | 5.26 | 4.83 | 4.83 | 5.07 | 5.07 |
| DANISH A | - | 5.67 | 6.00 | 5.57 | 6.00 |
| DUTCH A | 4.60 | 4.54 | 4.57 | 4.66 | 4.66 |
| ENGLISH A | 4.98 | 4.91 | 4.95 | 4.97 | 5.02 |
| FINNISH A | - | 4.50 | - | 6.00 | - |
| FRENCH A | 5.12 | 5.06 | 5.11 | 5.10 | 5.10 |
| GERMAN A | 5.17 | 5.18 | 5.14 | 5.01 | 5.23 |
| HINDI A | 6.22 | 6.17 | 6.75 | 6.67 | 7.00 |
| ICELANDIC A | 5.00 | 6.00 | 5.00 | - | - |
| INDONESIAN A | - | 6.33 | - | - | - |
| ITALIAN A | 4.00 | 5.50 | 6.00 | 3.67 | 5.40 |
| JAPANESE A | 5.28 | 5.50 | 6.11 | 5.75 | 5.77 |
| KOREAN A | 5.59 | 5.26 | 5.93 | 5.72 | 5.91 |
| NORWEGIAN A | - | - | 6.00 | 4.27 | 5.40 |
| POLISH A | 4.85 | 5.53 | 5.40 | 4.89 | 5.09 |
| PORTUGUESE A | 4.95 | 5.00 | 4.63 | 5.16 | 4.83 |
| RUSSIAN A | 5.03 | 4.70 | 4.74 | 5.05 | 5.16 |
| SPANISH A | 5.03 | 4.70 | 5.02 | 4.90 | 4.61 |
| SWAHILI A | - | - | - | 5.93 | 5.50 |
| SWEDISH A | 6.00 | 5.03 | 4.51 | 5.00 | 6.00 |
| THAI A | 5.11 | 5.18 | 5.09 | 5.13 | 5.37 |
| TURKISH A | - | - | - | 6.00 | - |
| VIETNAMESE A | 5.41 | 4.95 | 4.73 | 4.90 | 5.13 |
| GROUP 1 TOTAL | 5.06 | 4.97 | 5.03 | 5.05 | 5.05 |

| Subject | 2008 | 2009 | 2010 | 2011 | 2012 |
|-------------------------|------|------|------|------|------|
| GROUP 2 | | | | | |
| ADVANCED ARABIC B | - | - | 5.27 | 5.14 | 5.39 |
| ADVANCED DUTCH B | 4.67 | 4.78 | 4.63 | 4.78 | 5.26 |
| ADVANCED ENGLISH B | 4.96 | 5.07 | 5.15 | 5.23 | 5.22 |
| ADVANCED FRENCH B | 4.93 | 4.71 | 4.93 | 4.90 | 4.97 |
| ADVANCED GERMAN B | 5.75 | 5.00 | 5.21 | 5.28 | 5.22 |
| ADVANCED INDONESIAN B | - | 4.00 | 7.00 | 6.09 | 5.83 |
| ADVANCED JAPANESE B | 5.80 | 5.86 | 6.00 | 5.87 | 6.32 |
| ADVANCED KHMER B | 6.00 | 6.00 | - | 7.00 | 7.00 |
| ADVANCED MALAY B | - | - | - | 6.00 | 5.40 |
| ADVANCED MANDARIN B | 5.77 | 5.48 | 5.42 | 5.27 | 5.27 |
| ADVANCED PORTUGUESE B | 6.00 | 5.50 | 6.58 | 5.56 | 5.43 |
| ADVANCED SPANISH B | 5.43 | 5.88 | 4.90 | 5.67 | 5.83 |
| ADVANCED SWAHILI B | - | - | 7.00 | 6.60 | - |
| ADVANCED THAI B | - | 6.67 | 6.00 | - | - |
| ARABIC B | 5.64 | 5.30 | 4.79 | 5.65 | 5.65 |
| ARABIC B FOUNDATION | - | 4.70 | 5.00 | 4.00 | 5.18 |
| DANISH B | - | 6.00 | 6.00 | 5.50 | - |
| DUTCH B | 4.76 | 4.67 | 4.50 | 4.89 | 4.73 |
| DUTCH B FOUNDATION | 4.12 | 4.39 | 4.37 | 4.41 | 4.16 |
| ENGLISH B | 5.15 | 5.23 | 5.29 | 5.14 | 5.14 |
| ENGLISH B FOUNDATION | - | 4.67 | 4.36 | 4.74 | 4.09 |
| FRENCH B | 4.77 | 4.72 | 4.87 | 4.90 | 4.90 |
| FRENCH B FOUNDATION | 4.55 | 4.60 | 4.53 | 4.60 | 4.39 |
| GERMAN B | 4.77 | 4.85 | 4.98 | 4.96 | 4.99 |
| GERMAN B FOUNDATION | 5.03 | 5.00 | 5.08 | 5.22 | 5.11 |
| HINDI B | 6.00 | 5.14 | 4.56 | 4.21 | 5.85 |
| INDONESIAN B FOUNDATION | - | 4.25 | 4.00 | 4.00 | 4.00 |
| INDONESIAN B | 5.09 | 5.84 | 4.90 | 4.95 | 4.43 |
| ITALIAN B | - | - | - | - | - |
| JAPANESE B FOUNDATION | 4.00 | 4.75 | 4.25 | 4.95 | 4.43 |
| JAPANESE B | 6.20 | 5.40 | 4.75 | 5.75 | 5.36 |
| KAZAKH B | 5.17 | 4.90 | 5.05 | 4.92 | 5.42 |
| KHMER B | 5.00 | 6.00 | 5.00 | 5.00 | - |
| KHMER B FOUNDATION | 4.00 | - | 3.00 | - | 5.00 |
| MALAY B | - | - | - | 5.50 | 5.50 |
| MALAY B FOUNDATION | - | - | - | 5.25 | 5.00 |
| MANDARIN B FOUNDATION | 4.25 | 4.85 | 4.61 | 4.46 | 4.50 |
| MANDARIN B | 4.95 | 5.21 | 5.18 | 5.11 | 4.92 |
| PORTUGUESE B FOUNDATION | 4.67 | 4.00 | 4.75 | 5.00 | 5.75 |
| PORTUGUESE B | 5.33 | 4.33 | 5.25 | 4.44 | 5.33 |
| RUSSIAN B | 5.40 | 5.80 | 5.80 | 5.87 | 5.75 |
| RUSSIAN B FOUNDATION | - | - | - | 6.33 | 5.29 |
| SPANISH B | 4.45 | 4.86 | 5.02 | 4.86 | 4.56 |
| SPANISH B FOUNDATION | 4.52 | 4.26 | 4.52 | 4.57 | 4.71 |
| SWAHILI B | 4.13 | 5.25 | 5.79 | 5.29 | 5.33 |

| | | | | | |
|-------------------------|-------------|-------------|-------------|-------------|-------------|
| SWAHILI B FOUNDATION | - | 4.00 | 4.60 | 4.50 | 5.40 |
| SWEDISH B | - | - | - | 6.00 | 6.00 |
| THAI B | 5.10 | 4.25 | - | - | - |
| THAI B FOUNDATION | - | 4.50 | - | - | - |
| TURKISH B | - | 5.00 | - | - | - |
| URDU B | 3.53 | 3.82 | 4.25 | 4.17 | 3.71 |
| VIETNAMESE B FOUNDATION | - | - | - | - | - |
| VIETNAMESE B | 7.00 | - | - | - | - |
| GROUP 2 TOTAL | 4.96 | 5.03 | 5.10 | 5.09 | 5.07 |

| Subject | 2008 | 2009 | 2010 | 2011 | 2012 |
|----------------------|-------------|-------------|-------------|-------------|-------------|
| GROUP 3 | | | | | |
| BUSINESS STUDIES | - | 3.94 | 3.93 | 4.27 | 4.59 |
| ECONOMICS | 3.90 | 4.03 | 4.05 | 4.39 | 4.87 |
| GEOGRAPHY | 5.19 | 5.02 | 5.07 | 5.05 | 4.81 |
| HISTORY | 5.03 | 5.11 | 5.13 | 5.06 | 5.25 |
| HUMANITIES | 4.49 | 4.74 | 5.04 | 5.11 | 5.09 |
| PHILOSOPHY | - | - | - | - | 6.40 |
| GROUP 3 TOTAL | 4.96 | 5.00 | 5.05 | 5.06 | 5.09 |

| Subject | 2008 | 2009 | 2010 | 2011 | 2012 |
|----------------------|-------------|-------------|-------------|-------------|-------------|
| GROUP 4 | | | | | |
| BIOLOGY | 4.38 | 4.25 | 4.47 | 4.60 | 4.43 |
| CHEMISTRY | 4.39 | 4.32 | 4.39 | 4.43 | 4.57 |
| PHYSICS | 4.54 | 4.56 | 4.61 | 4.65 | 4.74 |
| SCIENCES | 4.52 | 4.47 | 4.51 | 4.47 | 4.76 |
| GROUP 4 TOTAL | 4.46 | 4.41 | 4.49 | 4.52 | 4.65 |

| Subject | 2008 | 2009 | 2010 | 2011 | 2012 |
|----------------------|-------------|-------------|-------------|-------------|-------------|
| GROUP 5 | | | | | |
| EXTENDED MATHEMATICS | 4.70 | 4.69 | 4.62 | 4.70 | 4.88 |
| MATHEMATICS | 4.40 | 4.34 | 4.39 | 4.37 | 4.54 |
| GROUP 5 TOTAL | 4.58 | 4.54 | 4.52 | 4.55 | 4.72 |

| Subject | 2008 | 2009 | 2010 | 2011 | 2012 |
|----------------------|-------------|-------------|-------------|-------------|-------------|
| GROUP 6 | | | | | |
| ARTS | - | - | - | - | - |
| DANCE | 5.30 | 5.59 | 4.79 | 4.98 | 4.46 |
| DRAMA | 4.93 | 4.97 | 4.94 | 5.05 | 5.33 |
| FILM | - | 5.43 | 5.30 | 5.25 | 5.25 |
| MUSIC | 4.79 | 4.71 | 4.82 | 4.84 | 5.07 |
| PERFORMING ARTS | 5.64 | - | - | 4.93 | - |
| VISUAL ARTS | 4.97 | 4.91 | 5.03 | 4.99 | 5.03 |
| GROUP 6 TOTAL | 4.93 | 4.90 | 4.97 | 4.98 | 5.10 |

| Subject | 2008 | 2009 | 2010 | 2011 | 2012 |
|----------------------|-------------|-------------|-------------|-------------|-------------|
| GROUP 7 | | | | | |
| PHYSICAL EDUCATION | 4.74 | 4.62 | 4.70 | 4.80 | 4.90 |
| GROUP 7 TOTAL | 4.74 | 4.62 | 4.70 | 4.80 | 4.90 |
| | | | | | |
| Subject | 2008 | 2009 | 2010 | 2011 | 2012 |
| GROUP 8 | | | | | |
| COMPUTER TECHNOLOGY | 4.27 | 4.49 | 4.48 | 4.47 | 4.65 |
| DESIGN TECHNOLOGY | 4.65 | 5.03 | 5.28 | 5.28 | 5.25 |
| TECHNOLOGY | 4.28 | 4.53 | 4.89 | 4.96 | 5.26 |
| GROUP 8 TOTAL | 4.41 | 4.67 | 4.91 | 4.95 | 5.14 |
| | | | | | |
| Subject | 2008 | 2009 | 2010 | 2011 | 2012 |
| GROUP 9 | | | | | |
| PERSONAL PROJECT | 5.07 | 5.04 | 5.13 | 5.11 | 5.29 |
| GROUP 9 TOTAL | 5.07 | 5.04 | 5.13 | 5.11 | 5.29 |

18 Mean grade worldwide June 2008–June 2012

| Mean grade per examination session | June 2008 | June 2009 | June 2010 | June 2011 | June 2012 |
|------------------------------------|-----------|-----------|-----------|-----------|-----------|
| | 4.79 | 4.79 | 4.87 | 4.89 | 4.99 |

19 Number of MYP certificates awarded June 2008 –June 2012

| Number of candidates awarded a certificate | June 2008 | June 2009 | June 2010 | June 2011 | June 2012 |
|--|-----------|-----------|-----------|-----------|-----------|
| | 6,217 | 6,670 | 7,427 | 8,058 | 8,716 |