

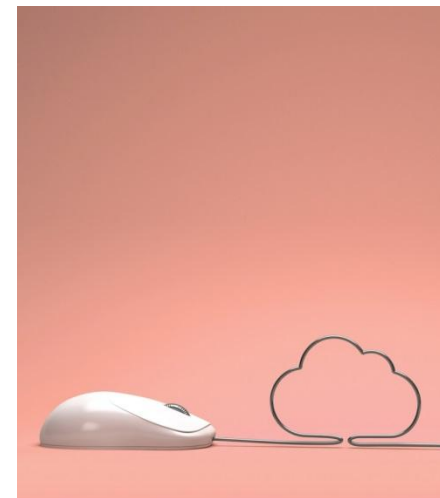


IBAEM Conference

Integrating online learning into the school's educational philosophy and strategy: voices of IB school leaders

Edward Lawless
Luz María Gutiérrez Vittini

The Hague
October 2013





Session Overview

- Pamoja Education introduction
- Voices of School Leaders
- Questions- discussion
- Conclusions



Pamoja Education Global School

1453
students

343
schools

70+
countries

12
courses



64
teachers



Courses: May and November session

Group 2



Mandarin ab initio



Spanish ab initio

Spanish B SL (February 2014)

Group 5



Mathematics HL

Mathematics SL (September 2014)

Group 6



Film SL

Group 3



Business and Management SL

Business and Management HL (September 2014)



Economics SL*

Economics HL



Information Technology in a Global Society SL

Information Technology in a Global Society HL



Philosophy SL



Psychology SL

Psychology HL

*Also available as a one year course as of Sept 2014



New initiatives

- support schools with **self-taught** languages and support **mother tongue** development: **Language A Literature SL**
- Partnership with UK Department for Education (DfE), IB and PJE:
 - September 2015
 - Maths Studies SL
 - Encourage students In England to continue Maths post 16
 - IB World Schools and students in non IB schools in England



Voices of school leaders

- **Jacque Weber**, Assistant Principal Upper School, The British IS of Jeddah, Saudi Arabia
- **Tobin Bechtel**, Assistant Head of school, International School Berne, Switzerland
- **Minal Shah**, Site Based-Coordinator (SBC), Aga Khan Academy Mombasa Kenya
- **Victor Ferreira**, IB & AP Program Coordinator, American School of The Hague, The Netherlands
- **David Redmond**, IB Diploma Coordinator, International Community School of Addis Ababa, Ethiopia



Guiding questions for panelists

1. Why do you think online learning can truly **educate** students for life after school?
2. Which online learning initiatives has your school introduced that provide an extension to their face to face learning experience, and promote **innovation** within the school community.
3. How has the decision to offer IB DP online courses impacted your philosophy as a school and your strategy as an educational leader?



www.pamojaeducation.com

